

Office to let

Office Clucerului

Bucharest, Sector 1, 78-80 Clucerului str.



Building information

Building status	Existing
Year of construction	2020
Parking ratio	To be agreed
Total building area	4 594 sq m

Commercial terms

Office space*	after login *
Service charge*	after login *
Minimum lease term	after login *
Availability	after login *

* Asking terms for m²/month

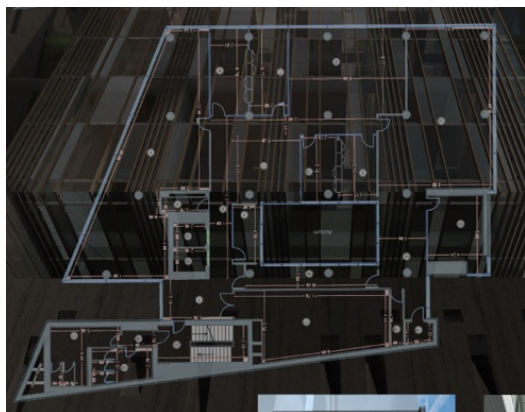
Location



Available space

Building completely leased

Typical floor plan



Public transport

Metro: M2

Bus: 205, 282, 335, 361, 381, 783

Tram: 41

Contact



+40 21 302 3400

More information